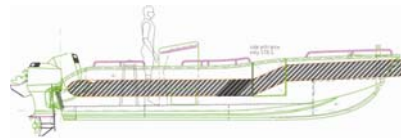
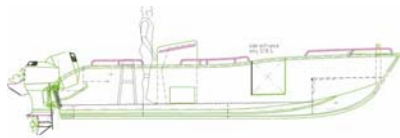


## ALUNAUTIC SB6.50

Our company has gained an excellent reputation for quality design and construction and reasonable prices. It is generally accepted as one of the premier aluminium builder of small (15' to 46') boats in The Netherlands. In recent years we build between 6 and 10 boats per year, depending on size and complexity. Increasing the volume of business, though desirable in some respects, is not a high priority. Our objective is to do an excellent job of design and construction on boats for exacting needs. Our boatbuilding operation has spawned an increasing amount of fabrication work, particularly marine accessories.

Below we see Euro Offshore Services' 6.50m aluminium sport boat with deep V-hull. The SB650 is one of the safest sport boats in it's class, because of the 3x2 separated foam filled compartments in the hull and it's anti-slide and self bailing deck. The anchor compartment incl. hatch, hoisting points and bollards are standard on this casco.



### Construction:

#### Hull & Deck

4 mm aluminium hull. On the inside chain welded. Outside fully welded.  
Non-skid decks.  
Self bailing decks.

### Options:

- Steering console.
- Steering system. Hydraulic/Mechanic
- Leaning post.
- Side seats.
- Lifting sling.
- Outboard engine. (max 180Hp)
- Boat cover.
- Anchor (line).
- Mooring line.
- Rubber Fenders (8cm D-fender).
- Fender (12cm PU foam filled fender)
- Aluminium railing.
- Fire extinguisher.
- Professional electrical Installation IP67.
- Masthead light.
- Navigation light.
- Horn.
- Aut. Bilge pump.
- 2 Component painted Hull.
- Cable support in hull
- Swim platform
- Side entrance

### Specifications:

Length 6,47m  
Beam 2.42m / 2.61m  
LWL app  
Draft 0.30m  
Boat Weight without engine 650Kg.  
Weight capacity Max. 1480Kg.  
Person capacity 8 Pers. (600Kg)  
Transom height: Long shaft Engine  
Max Hp. 180  
Dead rise @ Transom 13°  
Classification CE C (**CE B only in combination with the 12cm PU foam filled fender**)

### Standard Equipment:

- Hoisting points.
- Anchor compartment incl. hatch.
- Bilge hose.
- Towing pole
- 2 Bollards

